

The Integrator

PATENT
PENDING

The all new cantilever system with integrated transmission gears and protected internal rack. Totally compatible with all Comunello cantilever systems. Available on demand any-brand automation adapter.

Il nuovo sistema autoportante con trasmissione integrata e cremagliera protetta all'interno della monorotaia. Completamente compatibile con tutti i sistemi autoportanti Comunello. Disponibile su richiesta adattatore per automazioni di qualsiasi marca.



A new patented cantilever system with integrated transmission gears and protected internal rack. Made in Comunello.

Nuovo sistema cantilever con trasmissione integrata e cremagliera completamente protetta e nascosta all'interno della monorotaia. Made in Comunello.

- The pinion / rack coupling is completely protected inside the monorail housing, which guarantees **excellent protection** from ice blockage and atmospheric agents.
 - Carriage with integrated pinion providing quick installation: simply **connect** the pinion to the sliding motor.
 - Possibility to **adapt carriages** for use with actuators with different drive shafts, by using adapters.
 - Suitable for temperatures ranging from -30° to 80° C.
 - The monorails are manufactured from **high quality** steel profiles with a maximum thickness of 6 mm and are available in 3 and 6 m lengths in both galvanized and uncoated versions, depending on the different needs of the market and the installer.
 - Protected moving parts for **clean aesthetics** and increased **safety** levels.
- *L'accoppiamento pignone cremagliera all'interno della monorotaia garantisce una **completa protezione** agli agenti atmosferici.*
 - *Il carrello con pignone integrato viene **collegato** all'attuatore con apposito adattatore.*
 - *Il sistema Integrator può **essere adattato** alle diverse tipologie di attuatori scorrevoli.*
 - *Adatto a temperature da -30 °C a + 80 °C.*
 - *Le monorotaie sono in acciaio profilato di **elevata qualità** con spessori fino 6 mm e sono disponibili nelle versioni 3 e 6 metri grezze o zincate.*
 - *La protezione delle parti in movimento garantisce un livello di **sicurezza** più elevato mantenendo un'**estetica pulita**.*



Racks / Cremagliere



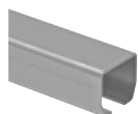
ART.

CG-50M

CG-50P

CG-50G

Monorail / Monorotaia



ART.

CGS-345M

CGS-345P

CGS-345G

Templates / Dime



ART.

CG-55M

CG-55P

CG-55G

CG-10

End cup / *Incontro*



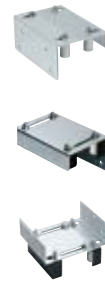
ART.
CG-25M
CG-25P
CG-25G
CG-30M
CG-30P
CG-30G
CG-35P
CG-35G

Bottom end cup
Incontro inferiore



ART.
CGS-346M
CGS-346P
CGS-346G

Guide plates / *Piastre*



ART.
CG-251
252-200
247 F
255-220
255-350
256-300
250-220
251-220
251-300
232-30
232-40



Tension bar / *Tirante*



ART.
CG-40

Carriages / *Carrelli*



ART.
CGS-500.8M
CGS-500.8P
CGS-500.8G

Adaptor / *Adattatore*



ART.
CG-58
CG-58 G

Foundation fixing / *Fissaggio*



ART.
CG-05P
CG-05G
CG-348

End stopper for monorail
Terminale per monorotaia



ART.
CGS-347M
CGS-347P
CGS-347G
CG-20M
CG-20P
CG-20G
CG-21M
CG-21P
CG-21G

Wall bracket
Staffa fissaggio a muro



ART.
CG-15M
CG-15P
CG-15G

Internally housed drive pinion connects directly to the rack integrated within the monorail

Il pignone all'interno del carrello trasmette il moto direttamente alla cremagliera integrata nella monorotaia

An 8 wheel carriage with new generation silent sealed bearings

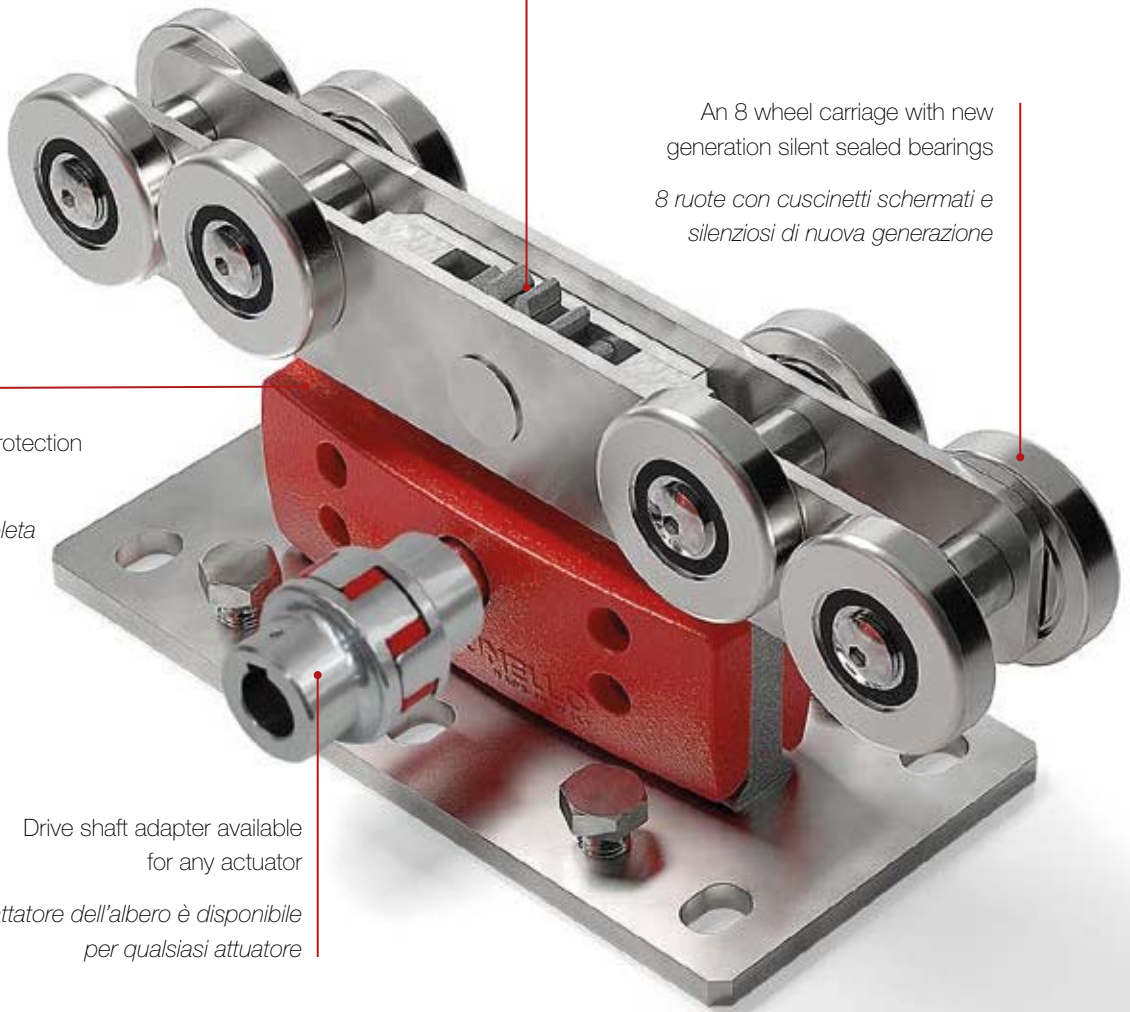
8 ruote con cuscinetti schermati e silenziosi di nuova generazione

Drive pinion casing provides complete protection

Il carter in alluminio garantisce una completa protezione

Drive shaft adapter available for any actuator

L'adattatore dell'albero è disponibile per qualsiasi attuatore



CGS-500.8P

FEATURES

- Noiseless bearings of new generation shielded to protect against dust suitable for temperatures from -30° C to + 80° C
- Self-balancing
- 8 support wheels for each carriage
- Longitudinal alignment on 16 wheels
- Central rotation stiffened pin

CARATTERISTICHE

- Cuscinetti silenziosi di nuova generazione schermati per una migliore protezione dalla polvere; adatti a temperature che vanno dai -30° ai +80° C
- Autobilanciato
- 8 ruote di supporto per ogni carrello
- Allineamento longitudinale su 16 ruote
- Perno centrale di rotazione

Mini



Monorail **CGS-345M**
+ Integrator pre-drilled rack **CG-50M**

Monorotaia **CGS-345M**
+ Integrator cremagliera preforata **CG-50M**



For cantilever gates up to
Per autoportanti fino a
7 m / 500 kg

INTEGRATOR MINI

CGS-500.8M

ACTUATORS FORT

400 24V - 500 230V



Piccolo



Monorail **CGS-345P**
+ Integrator pre-drilled rack **CG-50P**

Monorotaia **CGS-345P**
+ Integrator cremagliera preforata **CG-50P**



For cantilever gates up to
Per autoportanti fino a
8 m / 800 kg

INTEGRATOR PICCOLO

CGS-500.8P

ACTUATORS FORT

600/1000 24V

700/1500 230V



Grande



Monorail **CGS-345G**
+ Integrator pre-drilled rack **CG-50G**

Monorotaia **CGS-345G**
+ Integrator cremagliera preforata **CG-50G**



For cantilever gates up to
Per autoportanti fino a
16 m / 1200 kg

INTEGRATOR GRANDE

CGS-500.8G

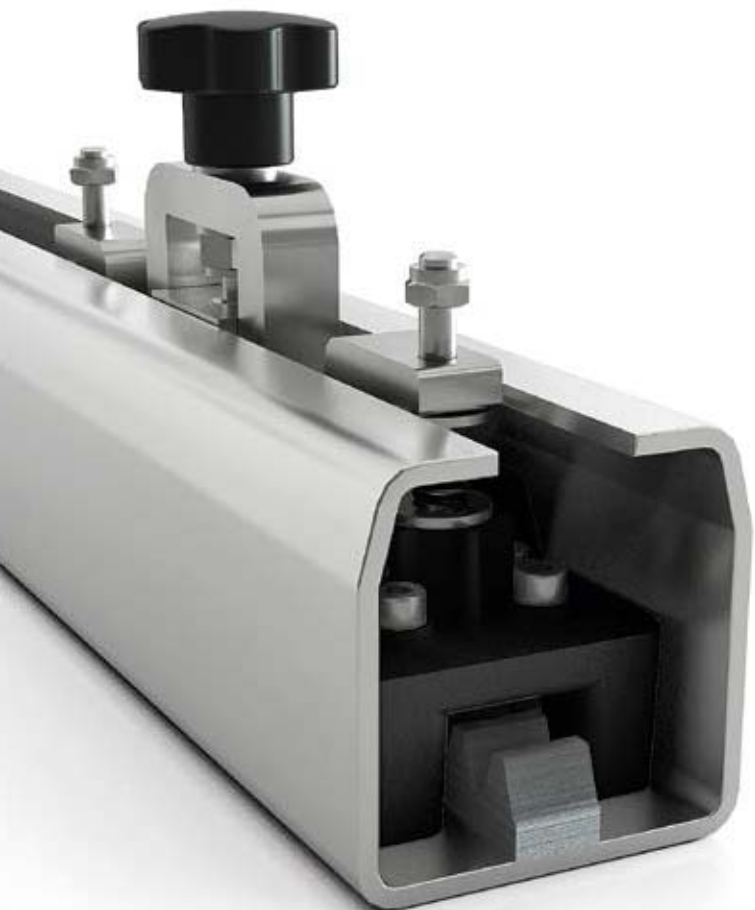
ACTUATORS FORT

2500 230V - 3500 380V



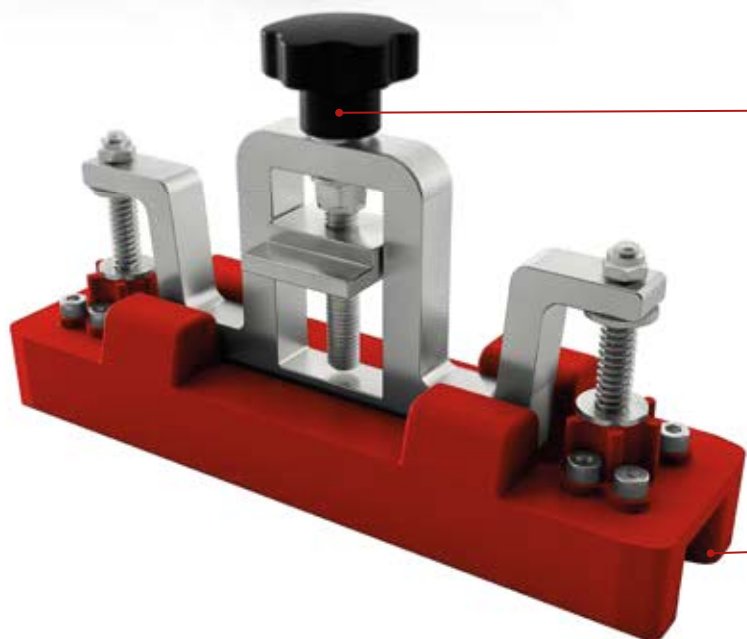
The Integrator rack centering device

La dima di centraggio Integrator



The Integrator centering guide quickly and simply centres the rack along its length by sliding in position inside the monorail. The central slot in the guide base holds the rack and the screw adjustment blocks everything in position so that the pre-drilled holes on the rack can be used as a guide for drilling into the monorail. When a second piece of rack is required just position the guide between the two pieces and tighten the blocking screw, this will perfectly align the teeth between the two racks.

La dima di centraggio del sistema Integrator permette di allineare in maniera semplice e veloce la cremagliera all'interno della monorotaia. La cremagliera preforata viene tenuta in posizione dentro l'apposita scanalatura ed avvitando la manopola è possibile bloccarla nella posizione corretta. Seguendo i prefori della cremagliera è ora possibile effettuare i fori per il fissaggio della stessa alla monorotaia. Per aggiungere un secondo pezzo di cremagliera è sufficiente posizionare la dima tra le 2 cremagliere per mantenere il passo corretto tra i denti.

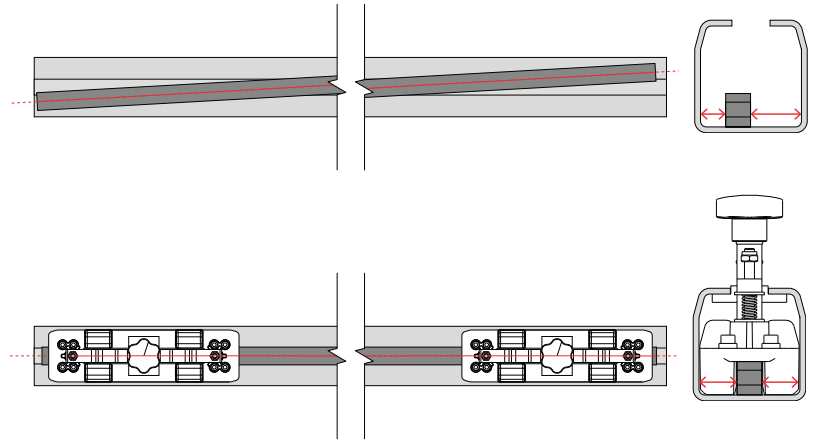


Tightening knob that applies clamping pressure to block the rack in position.

Manopola per il bloccaggio della cremagliera nella posizione corretta.

Centering guide with rack centering channel.

Scanalatura che ospita la cremagliera per il centraggio.

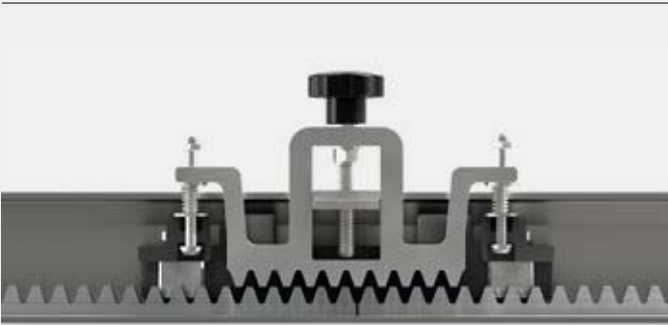
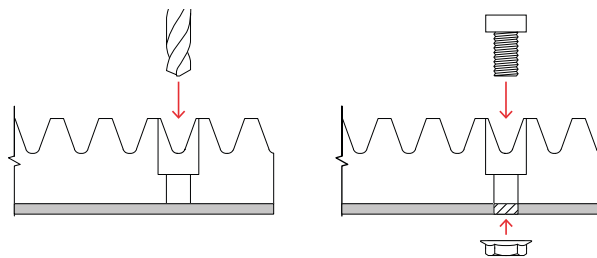


Position the first piece of track inside the monorail. / *Posizionare il primo pezzo di cremagliera all'interno della monorotaia.*

The 2 template guides, one positioned at each end of the track, will centre the track lengthways within the monorail. / *Le 2 dime all'estremità della cremagliera garantiscono il centraggio della cremagliera sulla monorotaia.*

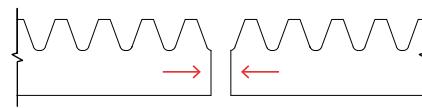


Using the pre-drilled rack as a guide drill fixing holes in the monorail. Fix the rack to the monorail. / *Forare la monorotaia seguendo i preforni della cremagliera. Fissare la cremagliera alla monorotaia.*



Insert the second piece of rack

Inserire il pezzo successivo di cremagliera



Position the template guide between the two pieces of rack and by tightening the template guide the rack teeth are registered correctly. Using the pre-drilled rack as a guide drill fixing holes in the monorail.

Posizionare una dima tra le due cremagliere ed una all'estremità della cremagliera appena inserita. Questo garantisce il corretto allineamento delle cremagliere mantenendo il passo tra i denti.



Watch the video for more information
Guarda il video per approfondimenti

KIT Integrator

MINI

CGS-500.8 M

Integrator kit, Mini version - Master & Slave

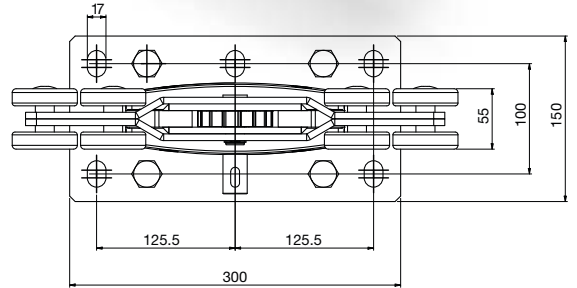
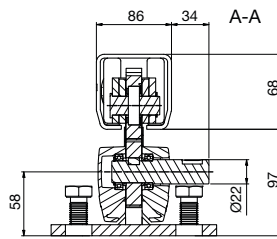
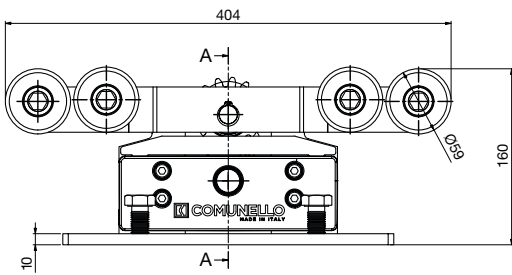
Kit Integrator Mini - Master & Slave

Kit système Integrator, version Mini - Master & Slave

Kit Integrator, Mini Ausführung - Master & Slave

Kit sistema Integrator, versión Mini - Master & Slave

Комплект Integrator, версия Mini - Master & Slave



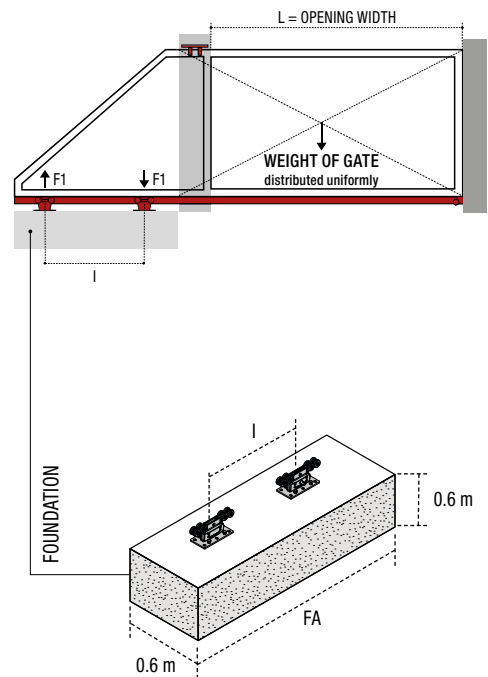
CODE	ART.	Size	Box info	
			Pos per pack	Kg
10131500 001	CGS-500.8 M	Mini	1	21.5

Finishing: Galvanized / Zincato

Minimum dimensions of the reinforced concrete casting

Dimensioni minime getto cemento armato

CGS-500.8M (F1 max=1200 Kg)												
Weight (Kg)	L=2 m		L=3 m		L=4 m		L=5 m		L=6 m		L=7 m	
	FA (m)	I (m)	FA (m)	I (m)	FA (m)	I (m)	FA (m)	I (m)	FA (m)	I (m)	FA (m)	I (m)
100	1.2	0.5	1.5	0.8	1.7	1.0	2.0	1.3	2.2	1.5	2.5	1.8
150	1.2	0.5	1.5	0.8	1.7	1.0	2.0	1.3	2.2	1.5	2.5	1.8
200	1.2	0.5	1.5	0.8	1.7	1.0	2.0	1.3	2.2	1.5	2.5	1.8
250	1.2	0.5	1.5	0.8	1.7	1.0	2.0	1.3	2.2	1.5	2.5	1.8
300	1.2	0.5	1.5	0.8	1.7	1.0	2.0	1.3	2.2	1.5	2.5	1.8
350	1.3	0.6	1.5	0.8	1.7	1.0	2.0	1.3	2.3	1.6	2.6	1.9
400	1.4	0.7	1.7	1.0	2.0	1.3	2.3	1.6	2.6	1.9	2.9	2.2
450	1.5	0.8	1.8	1.1	2.2	1.5	2.6	1.9	3.0	2.3	3.4	2.7
500	1.7	1.0	2.1	1.4	2.5	1.8	2.9	2.2	3.4	2.7	3.9	3.2



KIT Integrator

PICCOLO

CGS-500.8 P

Integrator kit, Piccolo version - Master & Slave

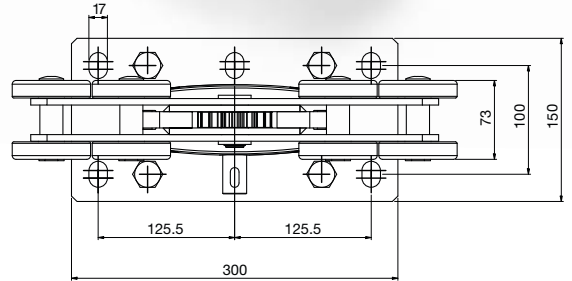
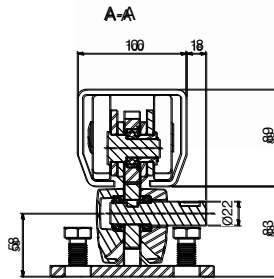
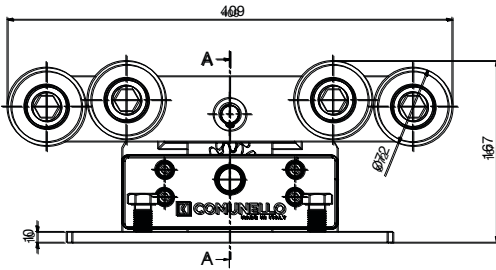
Kit Integrator Piccolo - Master & Slave

Kit système Integrator, version Piccolo - Master & Slave

Kit Integrator, Piccolo Ausführung - Master & Slave

Kit sistema Integrator, versión pequeña - Master & Slave

Комплект Integrator, версия Piccolo - Master & Slave



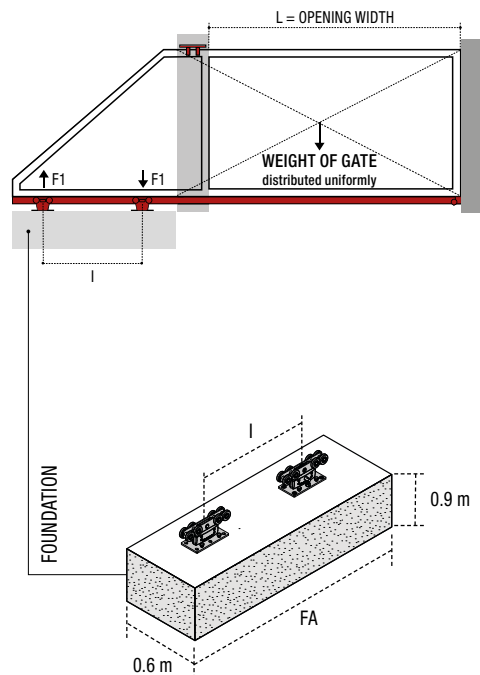
CODE	ART.	Size	Box info	
			Pos per pack	Kg
10131501 001	CGS-500.8P	Piccolo	1	26.5

Finishing: Galvanized / Zincato

Minimum dimensions of the reinforced concrete casting

Dimensioni minime getto cemento armato

CGS-500.8P (F1max=2000 Kg)												
Weight (Kg)	L=3 m		L=4 m		L=5 m		L=6 m		L=7 m		L=8 m	
	FA (m)	I (m)	FA (m)	I (m)	FA (m)	I (m)	FA (m)	I (m)	FA (m)	I (m)	FA (m)	I (m)
100	1.5	0.8	1.7	1.0	2.0	1.3	2.2	1.5	2.5	1.8	2.7	2.0
150	1.5	0.8	1.7	1.0	2.0	1.3	2.2	1.5	2.5	1.8	2.7	2.0
200	1.5	0.8	1.7	1.0	2.0	1.3	2.2	1.5	2.5	1.8	2.7	2.0
250	1.5	0.8	1.7	1.0	2.0	1.3	2.2	1.5	2.5	1.8	2.7	2.0
300	1.5	0.8	1.7	1.0	2.0	1.3	2.2	1.5	2.5	1.8	2.7	2.0
350	1.5	0.8	1.7	1.0	2.0	1.3	2.2	1.5	2.5	1.8	2.7	2.0
400	1.5	0.8	1.7	1.0	2.0	1.3	2.2	1.5	2.5	1.8	2.7	2.0
450	1.5	0.8	1.7	1.0	2.0	1.3	2.2	1.5	2.5	1.8	2.7	2.0
500	1.5	0.8	1.7	1.0	2.0	1.3	2.2	1.5	2.5	1.8	2.7	2.0
550	1.5	0.8	1.7	1.0	2.0	1.3	2.2	1.5	2.5	1.8	2.8	2.1
600	1.6	0.9	1.8	1.1	2.1	1.4	2.4	1.7	2.7	2.0	3.0	2.3
650	1.7	1.0	2.0	1.3	2.3	1.6	2.6	1.9	3.0	2.3	3.3	2.6
700	1.8	1.1	2.1	1.4	2.5	1.8	2.8	2.1	3.2	2.5	3.6	2.9
750	1.9	1.2	2.3	1.6	2.7	2.0	3.1	2.4	3.5	2.8	3.9	3.2
800	2.0	1.3	2.4	1.7	2.9	2.2	3.3	2.6	3.8	3.1	4.3	3.6



KIT Integrator

GRANDE

CGS-500.8 G

Integrator kit, Grande version - Master & Slave

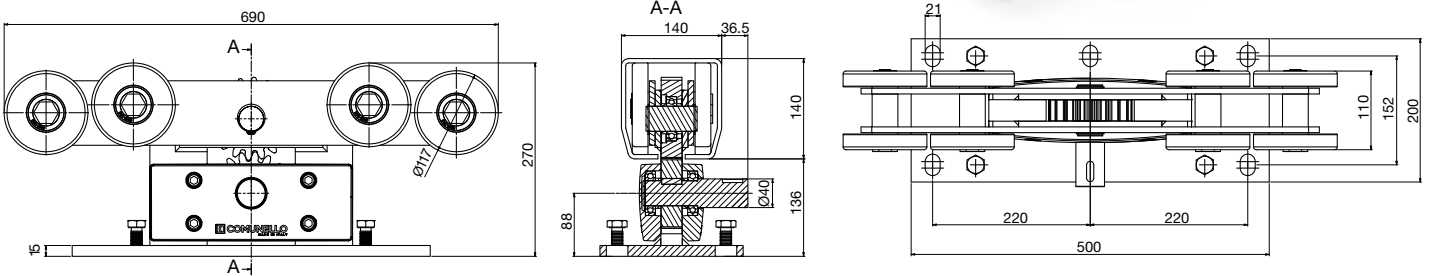
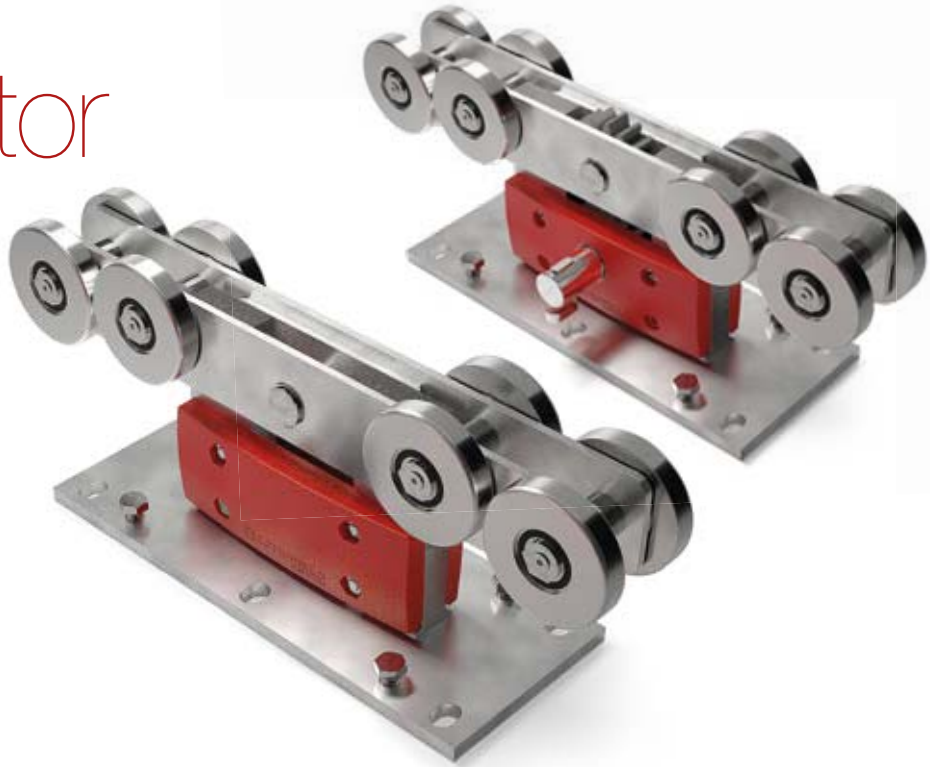
Kit Integrator Grande - Master & Slave

Kit système Integrator, version Grande- Master & Slave

Kit Integrator, Grande Ausführung - Master & Slave

Kit sistema Integrator, versión Grande - Master & Slave

Комплект Integrator, версия Grande - Master & Slave

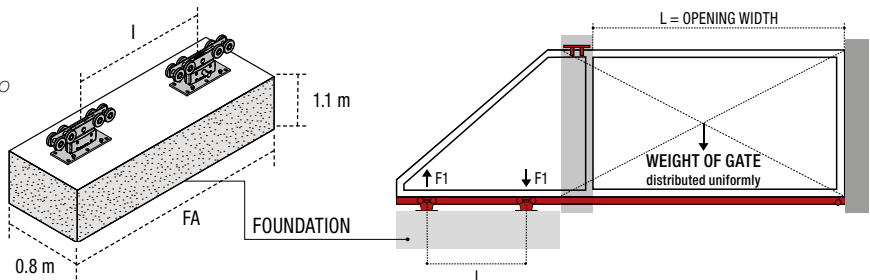


CODE	ART.	Size	Box info	
			Pcs per pack	Kg
10131502 001	CGS-500.8G	Grande	1	97

Finishing: Galvanized / Zincato

Minimum dimensions of the reinforced concrete casting

Dimensioni minime getto cemento armato



CGS-500.8G (F1max=4000 Kg)																		
Weight (Kg)	L=8 m		L=9 m		L=10 m		L=11 m		L=12 m		L=13 m		L=14 m		L=15 m		L=16 m	
	FA (m)	I (m)	FA (m)	I (m)	FA (m)	I (m)	FA (m)	I (m)	FA (m)	I (m)	FA (m)	I (m)	FA (m)	I (m)	FA (m)	I (m)	FA (m)	I (m)
500	2.9	2.0	3.2	2.3	3.4	2.5	3.7	2.8	3.9	3.0	4.2	3.3	4.4	3.5	4.7	3.8	4.9	4.0
550	2.9	2.0	3.2	2.3	3.4	2.5	3.7	2.8	3.9	3.0	4.2	3.3	4.4	3.5	4.7	3.8	4.9	4.0
600	2.9	2.0	3.2	2.3	3.4	2.5	3.7	2.8	3.9	3.0	4.2	3.3	4.4	3.5	4.7	3.8	4.9	4.0
650	2.9	2.0	3.2	2.3	3.4	2.5	3.7	2.8	3.9	3.0	4.2	3.3	4.4	3.5	4.7	3.8	4.9	4.0
700	2.9	2.0	3.2	2.3	3.4	2.5	3.7	2.8	3.9	3.0	4.2	3.3	4.4	3.5	4.7	3.8	4.9	4.0
750	2.9	2.0	3.2	2.3	3.4	2.5	3.7	2.8	3.9	3.0	4.2	3.3	4.4	3.5	4.7	3.8	4.9	4.0
800	2.9	2.0	3.2	2.3	3.4	2.5	3.7	2.8	3.9	3.0	4.2	3.3	4.4	3.5	4.7	3.8	4.9	4.0
850	2.9	2.0	3.2	2.3	3.4	2.5	3.7	2.8	3.9	3.0	4.2	3.3	4.4	3.5	4.7	3.8	4.9	4.0
900	2.9	2.0	3.2	2.3	3.4	2.5	3.7	2.8	3.9	3.0	4.2	3.3	4.4	3.5	4.7	3.8	4.9	4.0
950	2.9	2.0	3.2	2.3	3.4	2.5	3.7	2.8	3.9	3.0	4.2	3.3	4.4	3.5	4.7	3.8	5.1	4.2
1000	2.9	2.0	3.2	2.3	3.4	2.5	3.7	2.8	4.0	3.1	4.3	3.4	4.6	3.7	5.0	4.1	5.3	4.4
1050	2.9	2.0	3.2	2.3	3.5	2.6	3.8	2.9	4.1	3.2	4.5	3.6	4.8	3.9	5.2	4.3	5.6	4.7
1100	3.0	2.1	3.3	2.4	3.7	2.8	4.0	3.1	4.3	3.4	4.7	3.8	5.1	4.2	5.5	4.6	5.9	5.0
1150	3.2	2.3	3.5	2.6	3.8	2.9	4.2	3.3	4.5	3.6	4.9	4.0	5.3	4.4	5.7	4.8	6.2	5.3
1200	3.3	2.4	3.6	2.7	4.0	3.1	4.3	3.4	4.7	3.8	5.1	4.2	5.6	4.7	6.0	5.1	6.5	5.6